

# cocoon modules

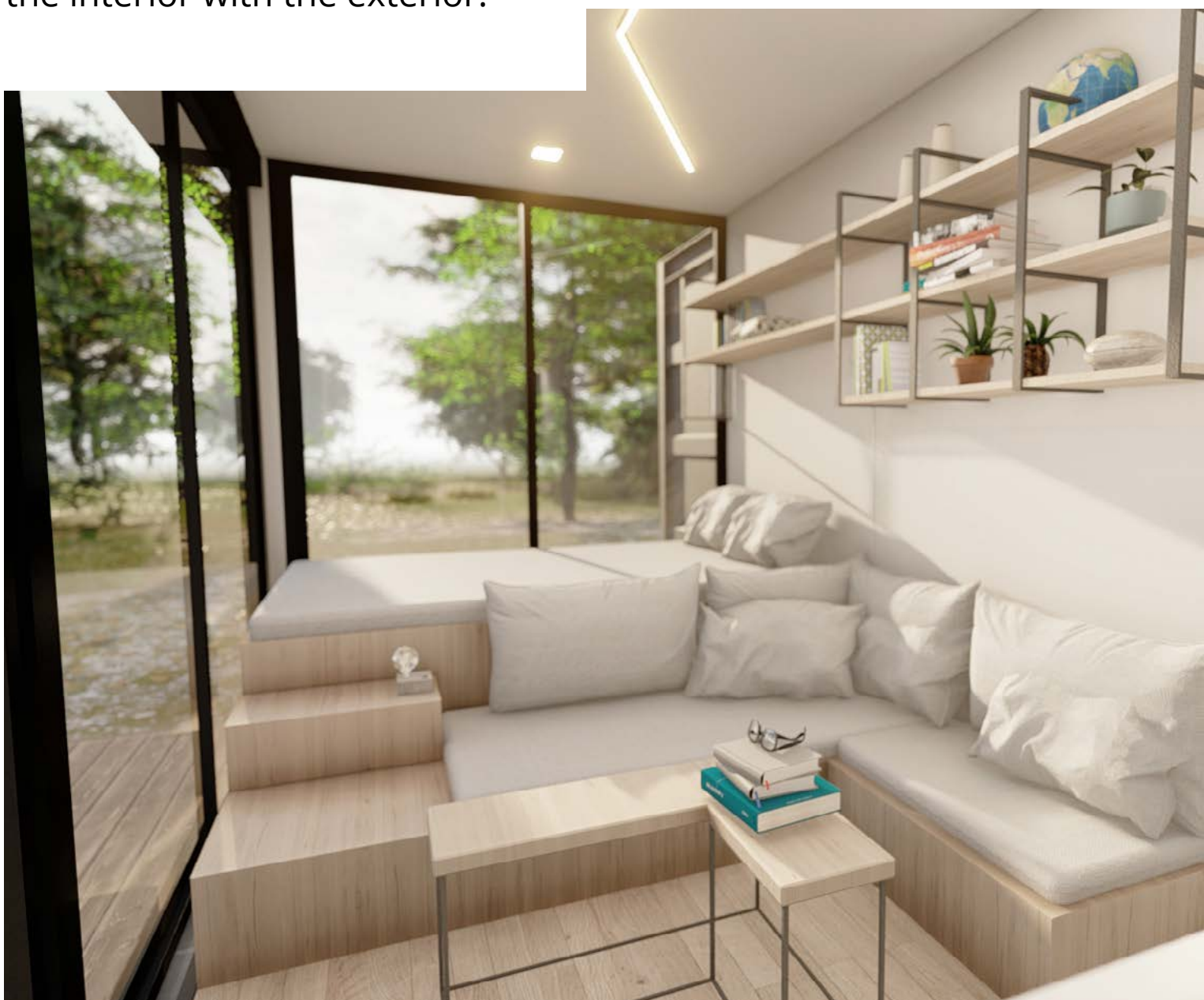
Sustainable - Premium - Modular

# cocoon modules

A new approach for the contemporary Nomad

## 20ft container cabin

This tiny module is a conscious solution for those wanting to minimize their CO<sub>2</sub> footprint with the possibility of also living off the grid. The unit is highly mobile and comprises of a living area with sofa, a double bed with storage underneath, a kitchenette and a bathroom. The large openings offer a 180° view of the outdoors blending the interior with the exterior.



# 20ft container cabin

GROUND FLOOR PLAN 20' HC CONTAINER

Dimensions

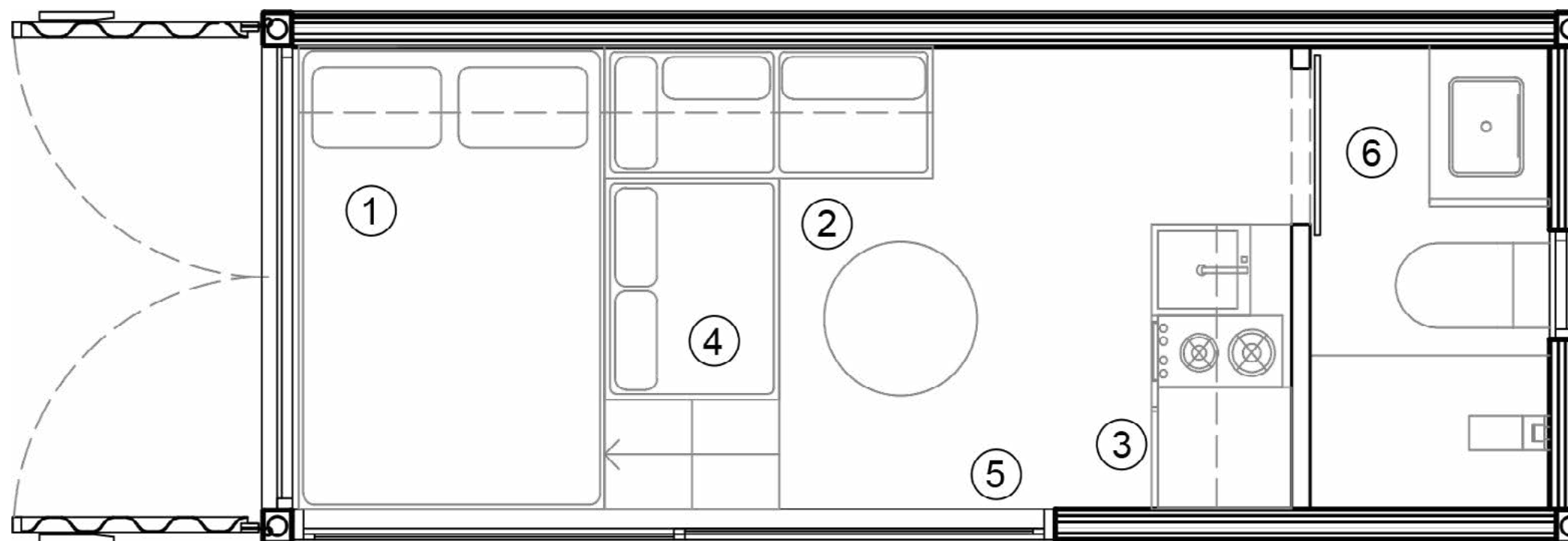
6,06m x 2,44m x 2,90m H

Surface

14,8m<sup>2</sup>

Volume

42,92m<sup>3</sup> W



1. Bedroom
2. Dining
3. Kitchenette
4. Sitting area
5. Entrance
6. WC

## 1. Thermal Insulation

- Achieving Energy class A
- Suitable for both cold and warm climates
- Insulation blocks and panels offer high thermal insulation and sound proofing properties (internally and externally)

## 2. External Humidity Protection

- External waterproofing membranes for humidity tightness (if required)

## 3. External Cladding

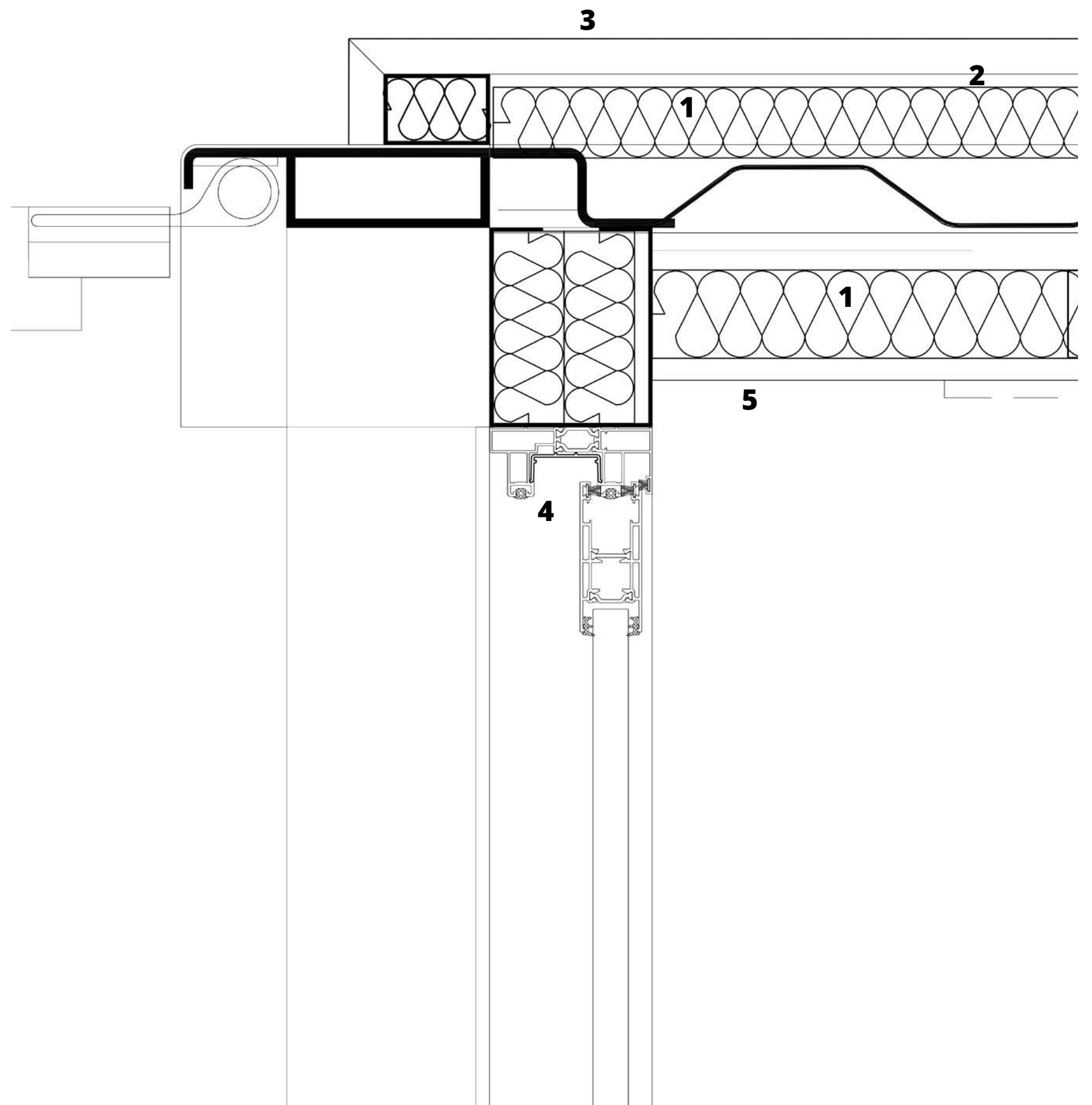
- Coloured external fiberboard plaster cladding or thermally processed wooden cladding

## 4. Openings (Doors & Windows)

- Energy efficient double glazed sliding doors and windows with thermal block
- Safety aluminum shutters, both electric and manually held

## 5. Internal Cladding (Wall Cover)

- Plaster boards with color or plywood





## Kitchenette

- Electric or gas cooker with 2 stoves and absorber
- Sink and tap
- Solid worktop
- Kitchen cupboards
- Refrigerator with freezer: 0,85 m height - 90 lit.
- Provision for washing machine
- Open shelving storage system

## Living Room

- L-shaped sitting area with storage space below or pull-out bed
- Pillows
- Extra single mattress
- Wall-mounted shelving system
- Adjustable dining table/ Coffee table





## Bedroom

- Storage below bed
- Wall-mounted shelving system
- Quality mattress



## Bathroom

- Shower
- Bathroom furniture with sink, taps and all accessories
- Mirror with led lighting
- Tiled floor and walls
- Toilet

## Miscellaneous

- External & internal lighting
- Electric board with single phase 220V
- Smart home application for remote control of basic functions
- Provision for washing machine
- External staircase to access the roof



# cocoon modules

[www.cocoonmodules.com](http://www.cocoonmodules.com)

Cocoon Modules Private Company, 28 Karaiskaki St, 105 54, Athens, GREECE

+30 693 8836847

[info@cocoonmodules.com](mailto:info@cocoonmodules.com)