

cocoon modules

Sustainable - Cost effective - Modular

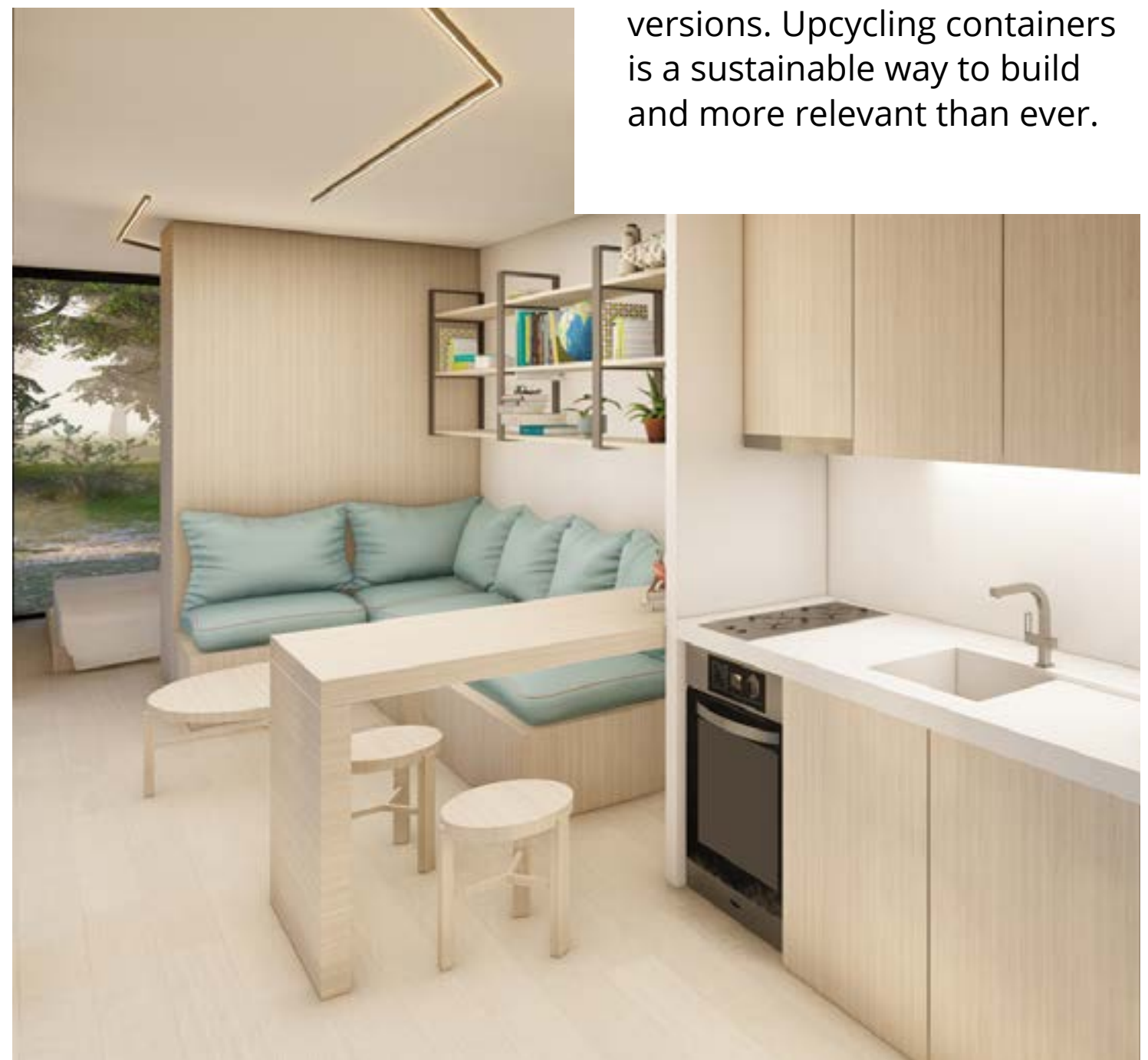
cocoon modules

A new approach for the contemporary Nomad



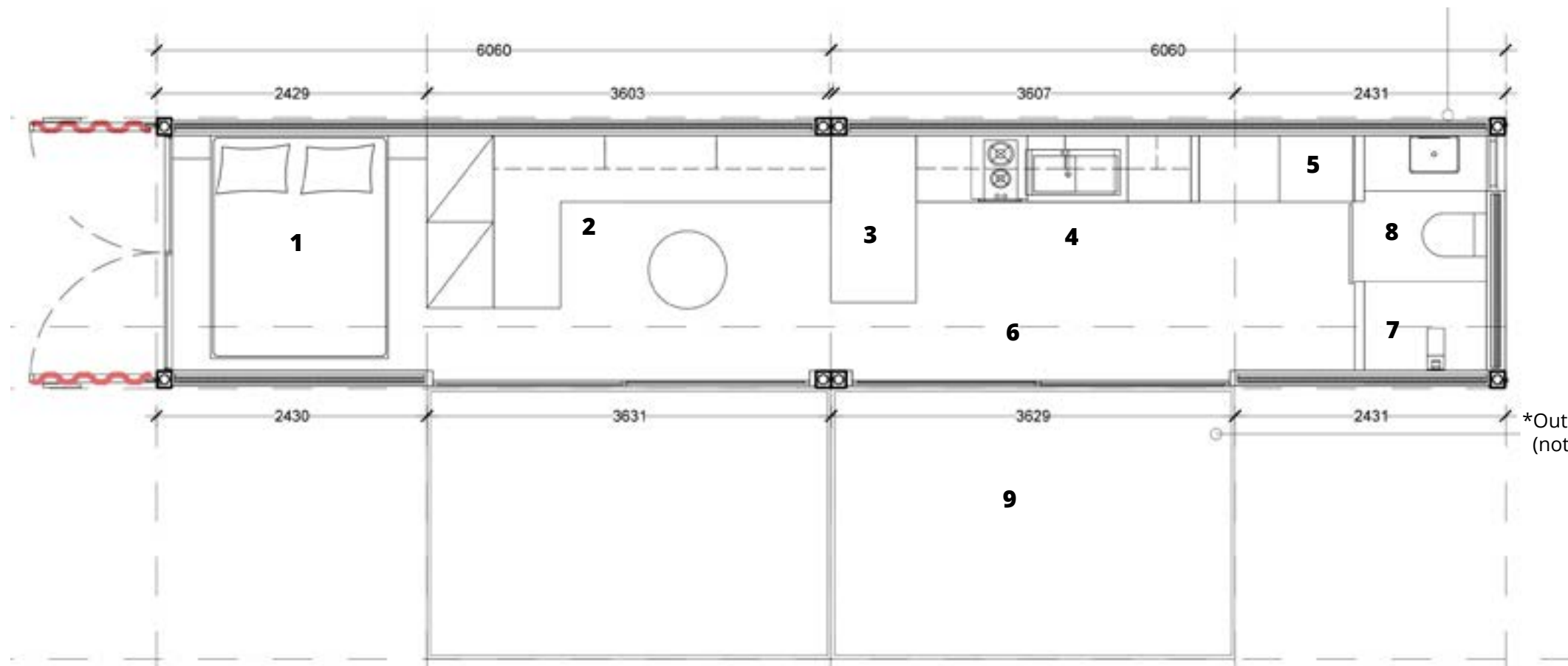
40ft container home

Cocoon Modules have created a container home that serves as an immersive space to connect with the surrounding nature. Fully functional and equipped, this versatile space takes you by surprise for its interior quality and design. This is also the base unit for any modular expansion and comes in both on & off-grid versions. Upcycling containers is a sustainable way to build and more relevant than ever.

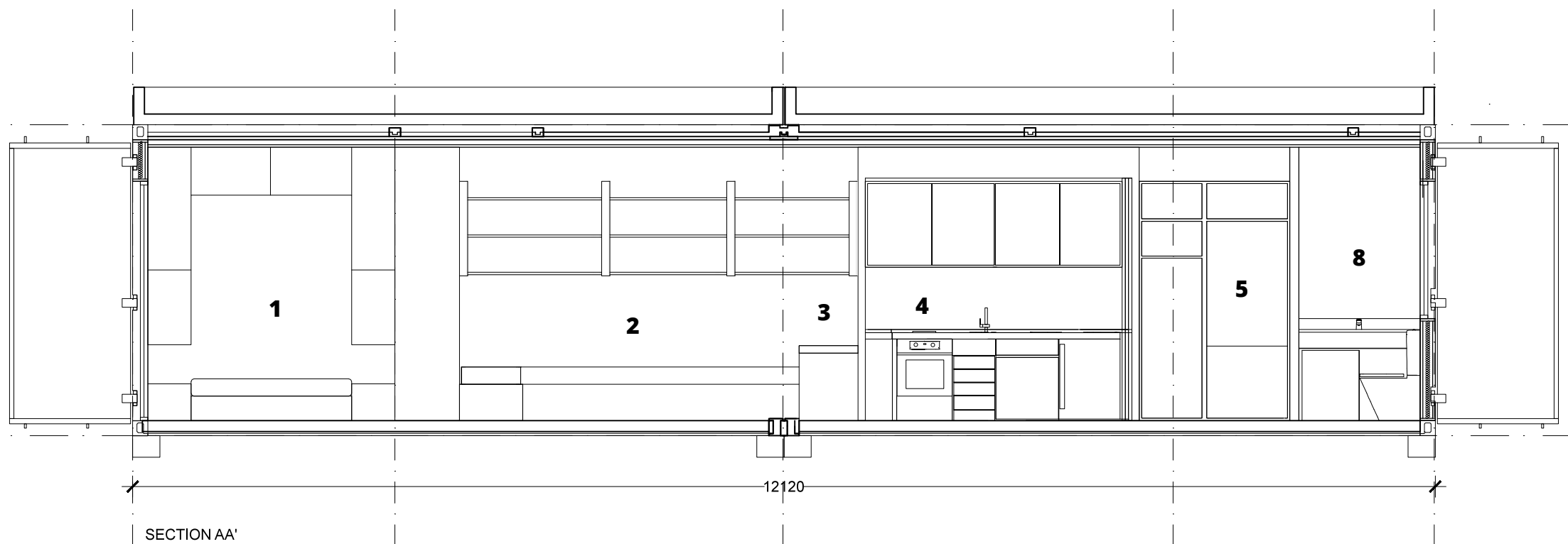


40ft container home

GROUND FLOOR PLAN 40' HC CONTAINER



- 1. Bedroom
- 2. Sitting Area
- 3. Dining
- 4. Kitchen
- 5. Storage
- 6. Entrance
- 7. Shower
- 8. WC
- 9. Outdoor Deck



Dimensions
12,12m x 2,44m x 2,90m H

Surface
29,6m²

Volume
85,84m³ W

1. Thermal Insulation

- Achieving Energy class A
- Suitable for both cold and warm climates
- Insulation blocks and panels offer high thermal insulation and sound proofing properties (internally and externally)

2. External Humidity Protection

- External waterproofing membranes for humidity tightness (if required)

3. External Cladding

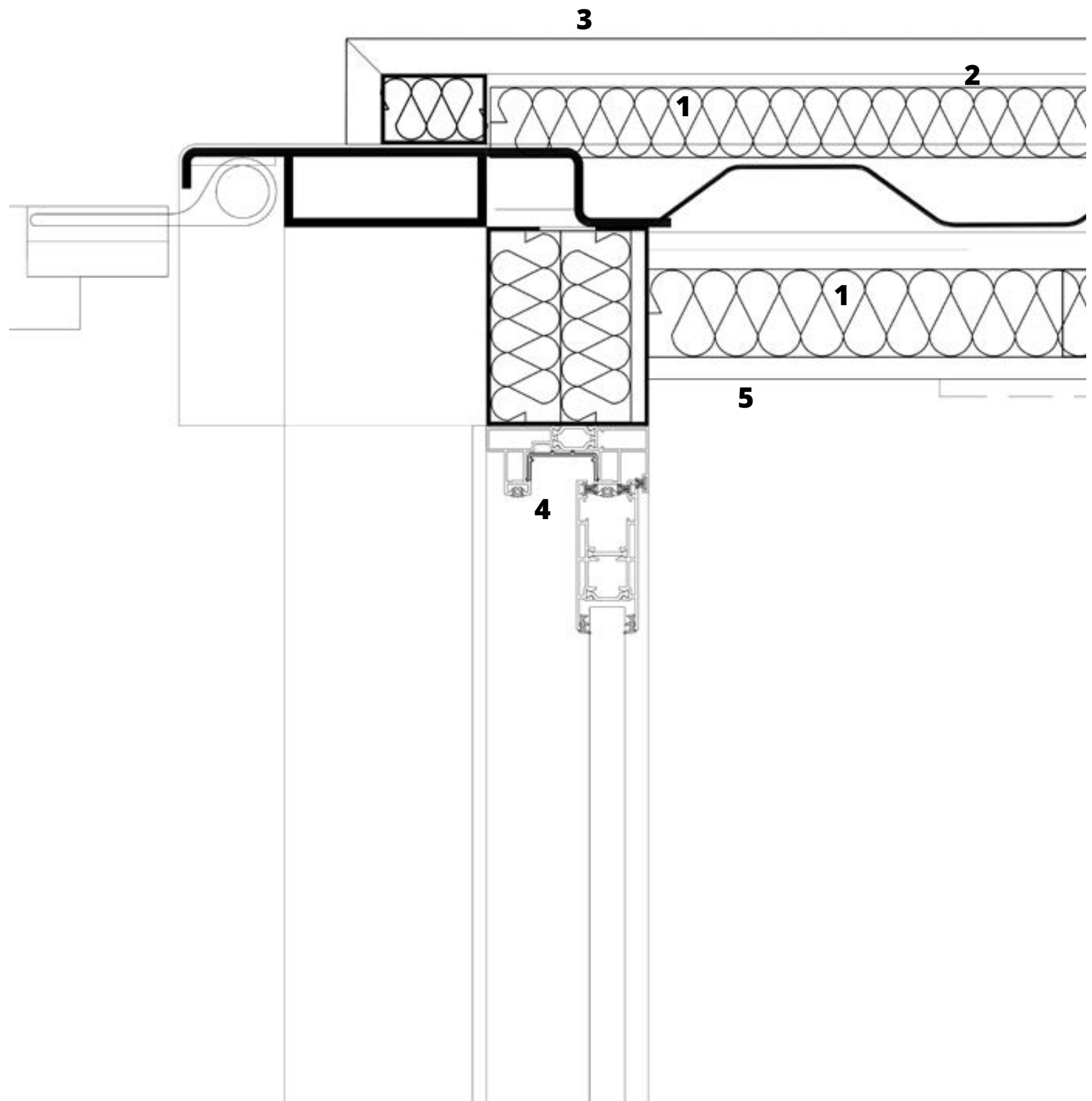
- Coloured external fiberboard plaster cladding or thermally processed wooden cladding

4. Openings (Doors & Windows)

- Energy efficient double glazed sliding doors and windows with thermal block
- Safety aluminum shutters, both electric and manually held

5. Internal Cladding (Wall Cover)

- Plaster boards with color or plywood





Kitchen

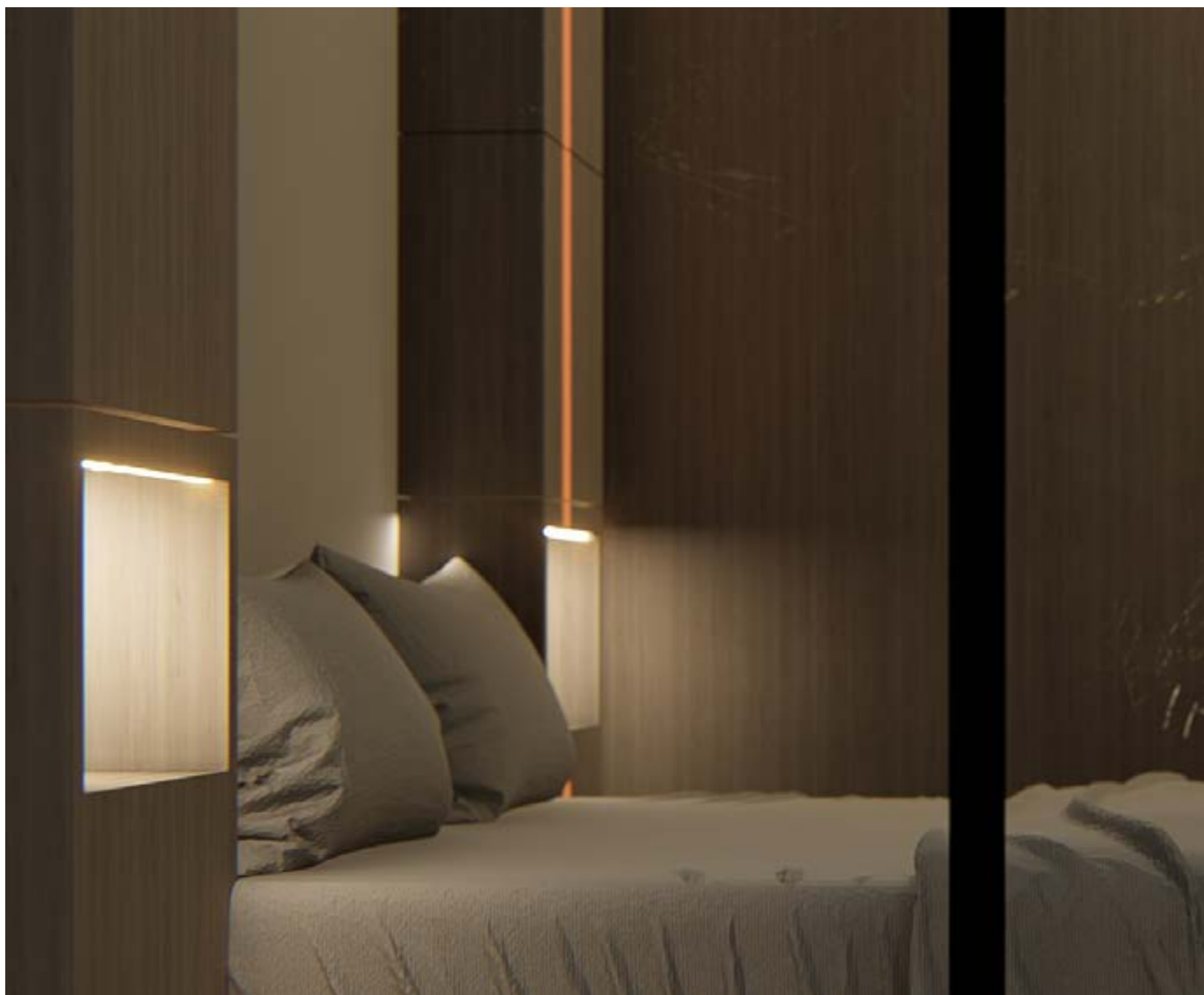
- Electric or gas cooker with 2/4 stoves, oven and absorber
- Sink and tap
- Solid worktop
- Kitchen cupboards
- Refrigerator with freezer: 1,7 m height - 370 lit.
- Provision for dishwasher
- Drawers and full-height cupboards

Living Room

- L-shaped sitting area with storage space below or pull-out bed
- Pillows
- Extra single mattress Wall-mounted shelves
- Dining table
- Coffee table (optional)*
- Stools (optional)*

*Is optional and not included in the price





Bedroom

- Sliding wardrobe with melamin (Automatic light on opening)
- Railings and full-height shelves
- Bed/ murphy bed* (optional)
- Storage with covered shelves around bed

* not included in the price

Bathroom

- Shower with rain system
- Bathroom furniture with sink, taps and all accessories
- Mirror with led lighting
- Tiled floor and walls
- Toilet

Miscellaneous

- External & internal lighting
- Electric board with single phase 220V
- Smart home application for remote control of basic functions
- Provision for washing machine
- External staircase to access the roof



Contact us

to request for a quote

cocoon modules

www.cocoonmodules.com

Cocoon Modules Private Company, Leof. Syngrou 190, Kallithea, 17671, Athens, GREECE

+30 6982501728

info@cocoonmodules.com